

# 勇攀“诸”峰



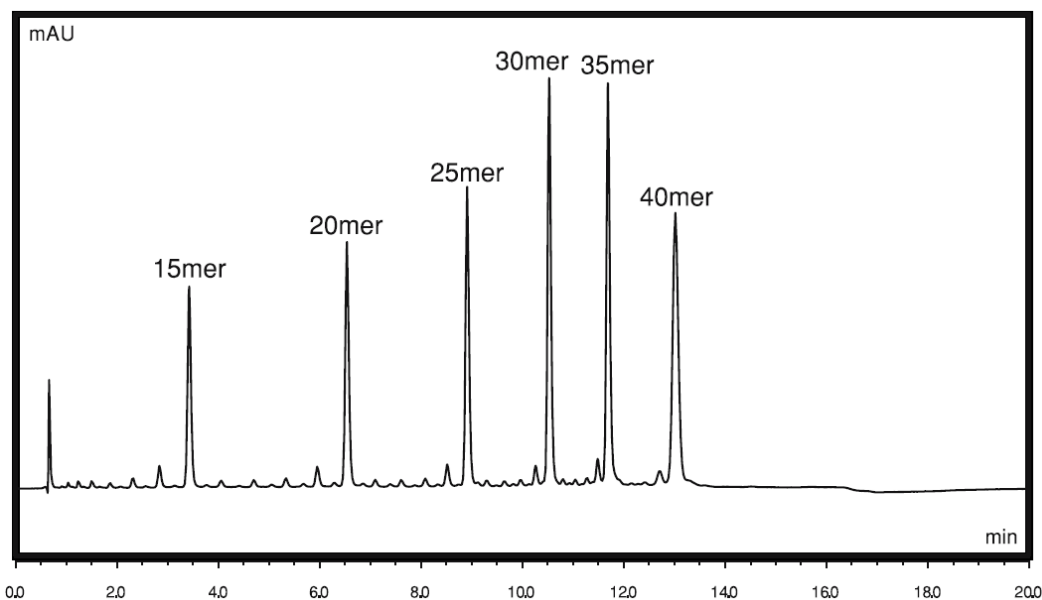
## 寡聚核苷酸分析

AN0110

色谱柱: SenSil™ C18, 1.6μm, 2.0 x 50mm  
规格: 50 x 2.0 mm ID  
货号: 2061011.s0502  
洗脱方式: Gradient  
流动相A: 15 mM TEA + 400 mM HFIP, pH ≈ 8.0  
流动相B: Mobile phase A / Methanol = 50/50

流动相:	Time (mins)	0.0	10.0	15.0	15.1
%B		40	50	50	40

流速: 0.2mL/min  
柱温: 50°C  
进样体积: 1.0uL  
检测器: UV@260nm



### 化合物名称:

1. 核苷酸混标 (15, 20, 25, 30, 35 and 40-mer)